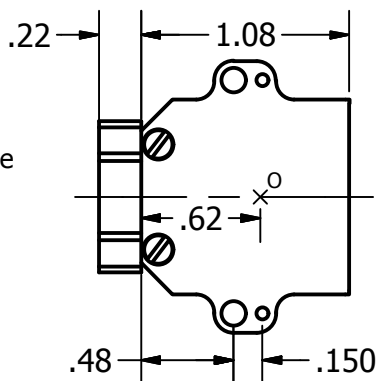


Note: Figure above is enlarged to 2:1 scale.

UNLESS OTHERWISE SPECIFIED,  
 DIMENSIONS ARE IN INCHES.  
 TOLERANCES ARE:  
 DECIMALS  
 .XX: .01  
 .XXX: .005

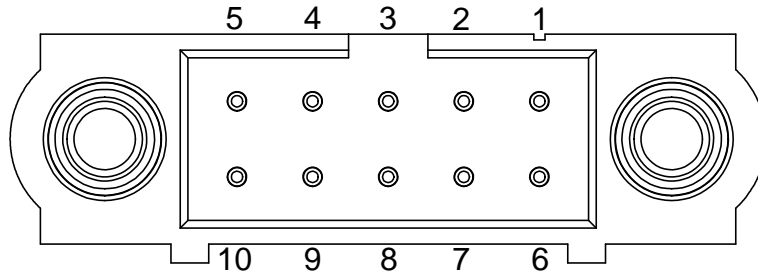


Note: Origin O for the sensor's coordinate system is located on the bottom face.

DRAWN Paul A. Lucas	11/28/2011	VectorNav Technologies, LLC		
CHECKED ----		TITLE		
QA ----		VN-100 Rugged Dimensions		
MFG ----		SIZE A	DWG NO 05-0003	REV 2
APPROVED Paul A. Lucas		SCALE 1 : 1	SHEET 1 OF 1	

## VN-100 Rugged Pin Numbering

(looking at mating side of male connector)



## VN-100 Rugged Pin Description

Pin	Name	Description
1	PWR	Power input at +5.0 V ( $\pm 0.5$ V)
2	TX_RS232	Serial data out of the device at <b>RS-232 voltage levels</b>
3	RX_RS232	Serial data into the device at <b>RS-232 voltage levels</b>
4	SYNC_OUT	Output signal for synchronizing with an external system
5	GND	Ground
6	TARE/RESTORE	Pulse high to tare sensor. Hold high at power on to restore factory settings (5V tolerant)
7	SYNC_IN	Input signal for synchronizing with an external system
8	TX_TTL	Serial data out of the device at <b>TTL (+3.3V) voltage levels</b>
9	RX_TTL	Serial data into the device at <b>TTL (+3.3V) voltage levels</b>
10	NC	No connect